

# **FACT SHEET**

## **M-153 (Ford Road) at I-275 Area**

### **Traffic and Environmental Study and Evaluation**

Public Information Meeting – May 30, 2013

Summit on the Park, Canton, MI

#### **Purpose**

The Michigan Department of Transportation (MDOT) is investigating improvements to existing traffic and roadway features while recognizing the needs of local municipalities and commercial businesses in the study area. Today, MDOT will recap the first three public meetings and present the Preferred Alternative.

#### **Study Area**

The study area for the project is bordered by Sheldon Road, Warren Road, Lotz Road, and Cherry Hill Road as indicated on the map located on the back side of this fact sheet.

#### **Preferred Alternative Quick Facts**

*Alternative 3 - Boulevard:* Provides a Ford Road and Haggerty Road boulevard with at least two through-lanes in each direction, with restricted left turns at intersections, numerous passenger vehicle turnarounds, and truck turnarounds.

#### **Next Steps**

- Solicit comments on the Preferred Alternative
- Fine tune Preferred Alternative
- Finalize Traffic and Environmental Study

#### **MDOT Project Manager**

Gorette Yung, P.E.

MDOT Taylor TSC

6510 Telegraph Road, Taylor, MI 48180

Phone: 313-375-2400

E-mail questions to: [yungg@michigan.gov](mailto:yungg@michigan.gov)

E-mail comments to: [MDOT-ford275@michigan.gov](mailto:MDOT-ford275@michigan.gov)

More information can be found at: [www.michigan.gov/mdotstudies](http://www.michigan.gov/mdotstudies)

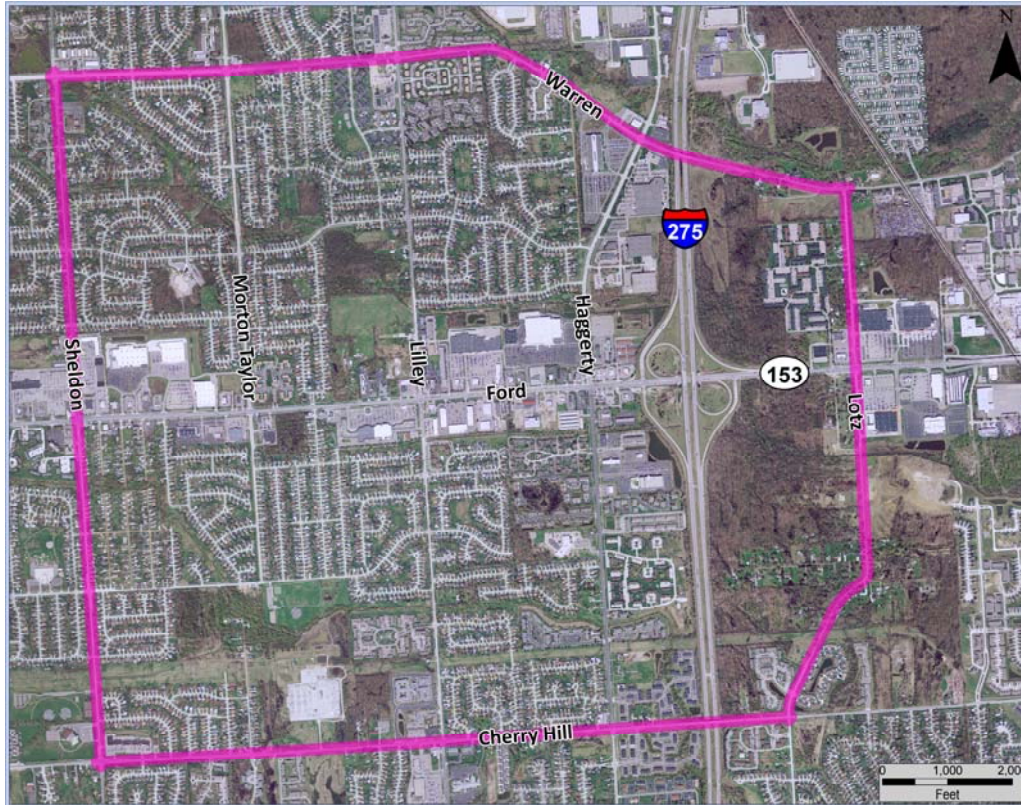
# FACT SHEET

## M-153 (Ford Road) at I-275 Area Traffic and Environmental Study and Evaluation

Public Information Meeting – May 30, 2013

Summit on the Park, Canton, MI

### Study Area Map



### Schedule

